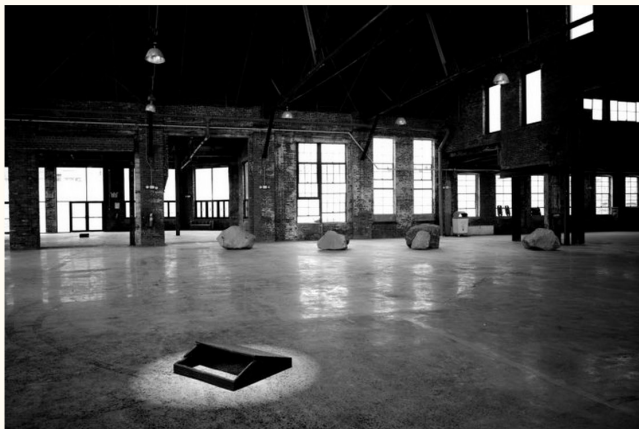




RICHARD NONAS AND JOEL SHAPIRO "CROSS-CUTS" @ KNOCKDOWN CENTER, NY

JUXTAPOZ // Thursday, 22 May 2014

Like 5 Tweet 1 Pin it 1 G+ 1



We went to the **Knockdown Center** in Brooklyn to check out the opening reception of two sculptors who emerged during the early 70's in New York City as pioneers of non-traditional sculptural installation. Richard Nonas and Joel Shapiro have made significant contributions to our understanding of space, scale and structure.

FOLLOW US

Or else!



Like 822k

Follow @JuxtapozMag

dollar menu & more

The taste you love
and love to share.

Explore the menu



Prices and participation may vary. © 2015 McDonald's

dollar menu & more

The taste you love
and love to share.

Explore the menu



Prices and participation may vary. © 2015 McDonald's

GALLERY

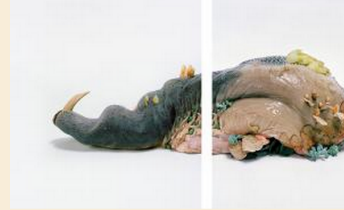
Every image in one place

Cross-Cuts is a spatial symphony where the unique architecture and dimensions of the landscape are transformed and challenged by the subtle geographical markers of the artists.

This striking exhibition is presented by Clocktower Productions and curated by MOMA PS1 founder Alanna Heiss, with Associate curator Joe Ahearn. The show will be on view at Knockdown Center, Saturday and Sunday from 2 to 6 pm, or by appointment until June 8, 2014.

text by varenka ruiz

Keywords richard nonas joel shapiro knockdown center new york city



ELISABETH HOGEMAN'S "GEOGRAPHIC TONGUES"

visit **GALLERY** ➤